

REVERSIBLE LINEAR ACTUATOR FOR VMV VALVES

CLP Eng.



- **Power supply: 24 - 230 V~ ; IP 40 protection**
- **Three-wire electric control**
- **Maximum run: 4 mm; Run times: 90 s/mm**
- **Direct mounting on valve without calibration**
- **Manual operation**



1. APPLICATION

CLP actuators are designed for operating, with linear movement, VMV seat valves used in heating and air-handling plants with fluid temperatures from 1 ... 120 °C.

2. OPERATION

CLP actuators can be controlled by an On-Off device (thermostat, teleswitch, manual switch) or by a modulating controller. The three-wire electric signal (Common - Opens - Closes) powers a small synchronous reversible electric motor with double coils, the rotary movement of which is converted into linear movement by an eccentric mechanism which permits a maximum run of 4 mm.

The run is limited by two microswitches operated automatically, by means of springs, when the valve plug strikes against one of its seats. This system ensures that the actuator is always able to exert its nominal force on the valve spindle, thereby permitting mounting without the need to calibrate the run.

By pressing the push-button on the head of the actuator, the handwheel situated between the base of the actuator and the attachment to the valve permits the manual operation of the valve.

3. MODELS

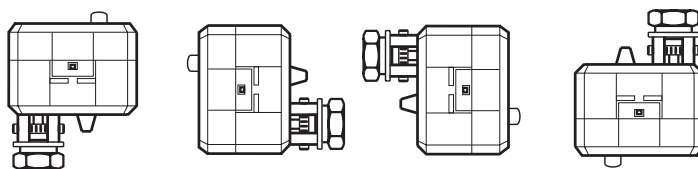
Code	Power supply V~ (VA)	Run mm.	Time s/mm.	Time s/ 4 mm.	Force Nm	Valves (up to DN) VMV
CLP 368	230 (1.5)	4	90	360	300	40
CLP 364	24 (1.5)	4	90	360	300	40

4. TECHNICAL DATA

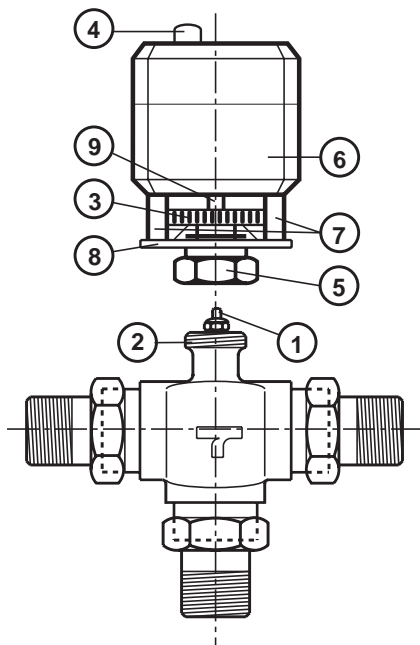
Power supply :		Force	300 Nm
- CLP ...8	230 V~ ±10%	Valve fluid temperature	1...120 °C
- CLP ...4	24 V~ ±10%	Ambient temperature :	
Frequency	50 ... 60 Hz	- operation	- 15...50 °C
Consumption	1.5 VA	- storage & transport	- 40...70 °C
Maximum run	4 mm.	Protection	IP 40
Time for 4mm run	360 s	Weight	0.55 kg

5. INSTALLATION

- Screw the valve coupling nut (5) on the actuator locking thread (2).
- Screw up the nut tightly.
- Carry out the electric wiring according to the wiring diagram and in observance of the safety regulations in force.

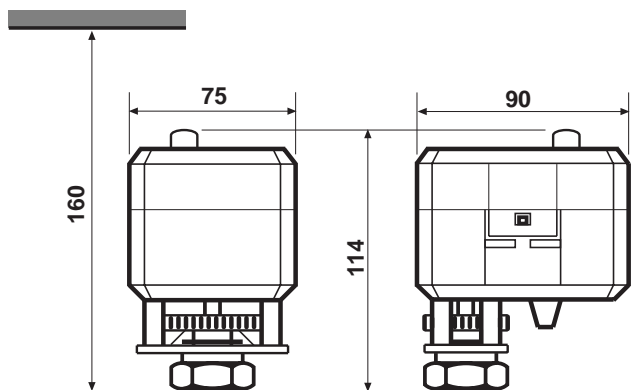


YES YES YES NO

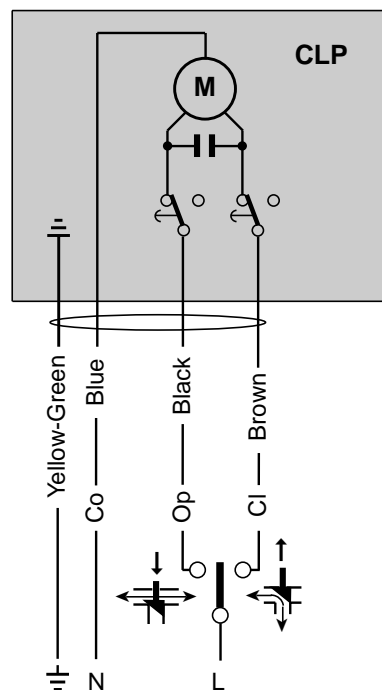


- 1 - Valve spindle
- 2 - Actuator locking thread
- 3 - Manual operating handwheel
- 4 - Press-button release for manual operation
- 5 - Valve coupling nut
- 6 - Mechanism enclosure
- 8 - Nut support plate
- 9 - Actuator spindle

6. OVERALL DIMENSIONS



7. WIRING DIAGRAM



20132 Milan Via San G.B. De La Salle, 4/a	Head Office & Sales Tel. +39.02.2722121 (TI) Tel. +39.02.45476193 (FW) Fax +39.02.2593645
00146 Rome Viale G. Marconi, 437	Reg. Off. Central & Southern Tel. +39.06.5573330 Fax +39.06.5566517
25048 Edolo (BS) Via Gen. Treboldi 190/192	Orders and Shipping Tel. +39.0364.7732.00/02 Fax +39.0364.770016
Web: www.coster.info	E-mail: info@coster.info



D 33126

