

OUTSIDE TEMPERATURE SENSOR

SAE Eng.



- **NTC temperature sensing element**
- **Range:**
– (– 30... 40 °C)
- **Installation:**
– on wall only

1. APPLICATION

For measurement of outside temperature.

To be installed on a North or North-West wall of the building, as far away as possible from chimneys, windows and sources of heat in general.

2. MODEL AVAILABLE

Code	Description	Range	Sensing element	Max. length cables of :		
				1mm ²	1.5 mm ²	2.5 mm ²
SAE 001	In 45x80x35 waterproof wall-mount enclosure	– 30... 40 °C	NTC 1 kΩ	350 m	500 m	1000 m

3. TECHNICAL DATA

Temperature sensing element:

Type	see table in 2 above
Temperature constant	10 min.
Measurement range	see table in 2 above
Protection	IP 54
Cable entry	PG 11

Materials:

Enclosure	NYLON
Dimensions	see table in 2 above
Installation	on wall
Construction standards	Italian Electr. Committee (CEI)
Weight	80 g

4. INSTALLATION

SAE must be installed at a height of 2.5 to 3 metres from the ground, on an external wall of the building facing **North** or **North-West** and at a point which represents the coldest part.

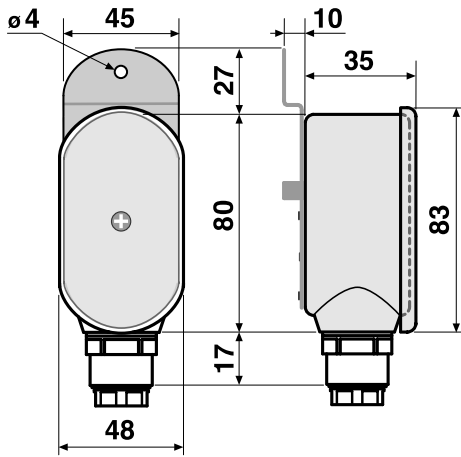
It must be sited as far as possible from windows and sources of heat in general. The following sites **MUST BE STRICTLY AVOIDED**: corners, underneath balconies and, in particular, the vicinity of chimneys or kitchen aeration grilles.

- Separate the cover from the enclosure by loosening the screw holding them together.
- Fix the enclosure to the wall using the hole in the mounting plate.
- Carry out the electric wiring in strict accordance with the diagram and with the safety regulations in force, using cables of the appropriate diameter (**NOT telephone or similar cable**). Refer to table in 2 above.
- Replace the cover on the enclosure and tighten up the securing screw.

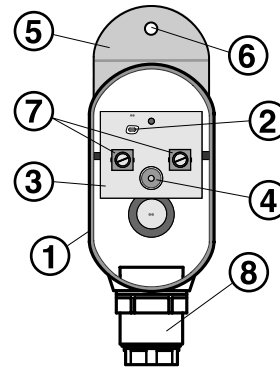
Warning:

- **If the sensor is to be connected using a single bipolar cable, the distances shown in the table in 2 above must be strictly observed to avoid compromising correct functioning.**
- **To connect several sensors using a single multicore cable it is essential that ALL the detectors are of COSTER manufacture.**
- **For correct data measurement it is essential that all the above instructions are carried out to the letter.**

5. OVERALL DIMENSIONS

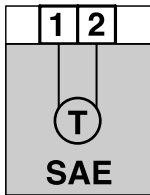


6. ENCLOSURE

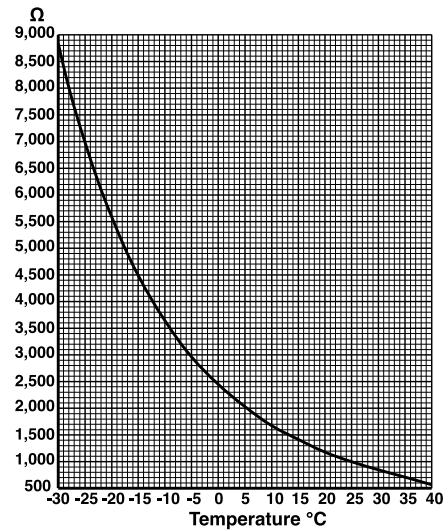


- 1 - Cover
- 2 - Sensing element
- 3 - Printed circuit
- 4 - Cover securing screw
- 5 - Sensor mounting plate
- 6 - Mounting plate screw hole
- 7 - Terminals for connections
- 8 - PG 11 cable entry

7. WIRING DIAGRAM



8. NTC 1 KΩ DETECTORS : TEMPERATURE/RESISTANCE



Amendments to version dated 09.11.01

Updated: MC 11.02.05

Page	Section	Description updates
1	General	Insertion photograph
2	4 Installation 5/6/7	Amendment text (see connections). Amendments diagrams (dimensions, description & wiring diagram).
	8 Diagram	Replacement graph (previous one unclear)



Head Office & Sales
Via San G. B. De La Salle, 4/a Tel. +39 022722121
20132 - Milan Fax +39 022593645

Reg. Off. Central & Southern
Via S. Longanesi, 14 Tel. +39 065573330
00146 - Roma Fax +39 065566517

Orders and Shipping
Via Gen. Treboldi, 190/192 Tel. +39 0364773200
25048 - Edolo (BS) Tel. +39 0364773202
Fax +39 0364770016

E-mail: info@coster.info Web: www.coster.info



D 33261

