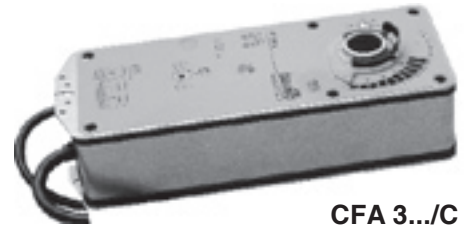
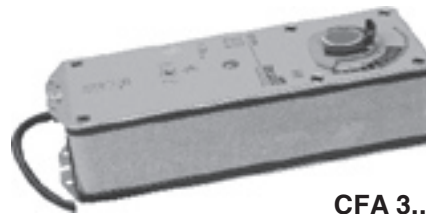


ACTUATORS FOR DAMPERS WITH SPRING RETURN (max. 3 m² - 15 Nm)

CFA 32.. – CFA 30.. Eng.



CFA 3.../C



CFA 3...



- **Power supply**
 - CFA ..8 (230 V~) - CFA ..4 (24 V~/-)
- **Electric control:**
 - SPST (CFA 32..)
 - progressive 2 ...10 V– (CFA 304)
- **Rotation:**
 - angle max 95°
 - run time 150 s
 - time to emergency 16 s
- **Installation:**
 - directly on damper shaft

1. APPLICATION

CFA ... actuators are designed for the operation, with linear rotary movement, of dampers in ventilating and air-conditioning sites.

Their available torque (15 Nm) permits operating dampers up to 3 m² provided that these have a well-balanced movement.

2. MODELS

Code	Power supply & consumption	Max angle	Run time	Emergency time	Torque	Control	Auxiliary switch supplied
CFA 328	230 V~ ± 10% (11 VA)	95°	150 s	16 s	15 Nm	SPDT	—
CFA 328/C	230 V~ ± 10% (11 VA)	95°	150 s	16 s	15 Nm	SPDT	2 SPDT
CFA 324	24 V~/– ± 20% (10 VA)	95°	150 s	16 s	15 Nm	SPDT	—
CFA 324/C	24 V~/– ± 20% (10 VA)	95°	150 s	16 s	15 Nm	SPDT	2 SPDT
CFA 304	24 V~/– ± 20% (10 VA)	95°	150 s	16 s	15 Nm	2 ...10 V–	—
CFA 304/C	24 V~/– ± 20% (10 VA)	95°	150 s	16 s	15 Nm	2 ...10 V–	2 SPDT

3. ACCESSORIES (optional)

Code	Description
PCS 104	Built-in manual positioner 0...100%, (only for actuators with 2 ... 10 V– control) .
KH 8	Universal crank arm for damper shafts; (ø 10 ... 18 mm. - □ 10 14 mm.).
KH-AF	Actuator arm (specific for CFA actuators).
KG 10	Ball joint for rods (with ø 10 mm. max.).
ZG-AF	Kit for surface mounting of actuators (specific for CFA actuators).

4. TECHNICAL DATA

Power supply:		Type of control	see "Models"
– CFA ..8	230 V~ ± 10%	Electrical connections: (pre-set)	
– CFA ..4	24 V~/– ± 20%	– CFA 32..(1cable control)	1m,2 x 0.75 mm ²
Frequency	50...60 Hz	– CFA 32../C(2 cables: 1control+ 1aux. switch)	1m,6 x 0.75 mm ²
Consumption:		– CFA 304(1cavetto: alim. e com.)	1m,5 x 0.75 mm ²
– CFA 328	11 VA (6.5 W)	– CFA 304/C(2 cavetti: 1alim.e com.+1cont.aux.)	1m,6 x 0.75 mm ²
– CFA 324/304	10 VA (6 W)	Ambient temperature:	
Torque	15 Nm	– operation	– 30...+50 °C
Run times / emergency	see "Models"	– transport & storage	– 40...+80 °C
Direction of rotation	depends on how installed	ambient humidity	95% (EN 60730-1)
Rotation angle	max.95°(adjustable)	Protection	IP 54
		Weight:	about 3 Kg

5. INSTALLATION

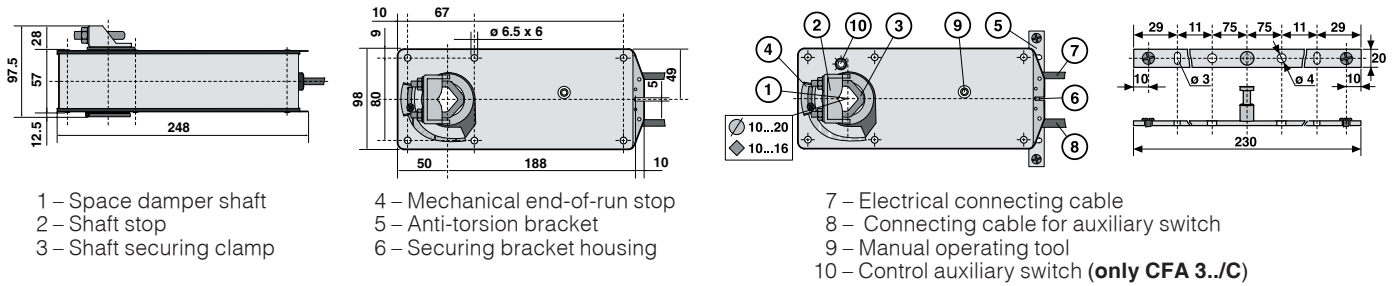
Before attaching the actuator to the damper, carry out the following preliminary checks in order to avoid any difficulties at the moment of installation.

Check:

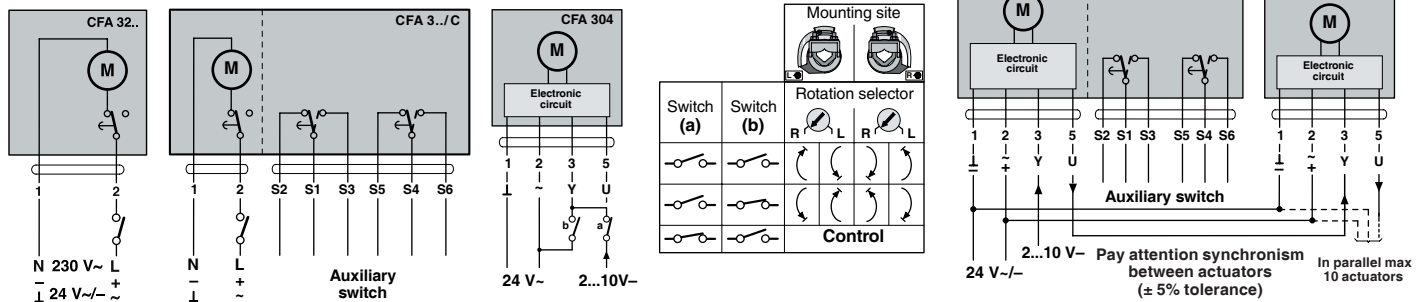
- that there is sufficient space available for installing the actuator, i.e. between the damper shaft and any walls, channels or pipework in the immediate vicinity.
- the dimensions of the dampers (max. 3 m²) and the balance on the shaft.
- that the motor has all parts necessary for its correct installation.

The actuator must be installed directly on the damper shaft (for measurements see section 8). Position the damper at about half run, insert the actuator on the pin and, using the anti-torsion adjustable bracket supplied, secure it; secure also the shaft by means of the assembled motor block. Make the electrical connections using the cable already attached and observing the safety regulations in force. **N.B. To lengthen the cables supplied do NOT – repeat NOT - use telephone or similar cables. It is possible to connect several actuators in parallel, paying attention to their technical features.**

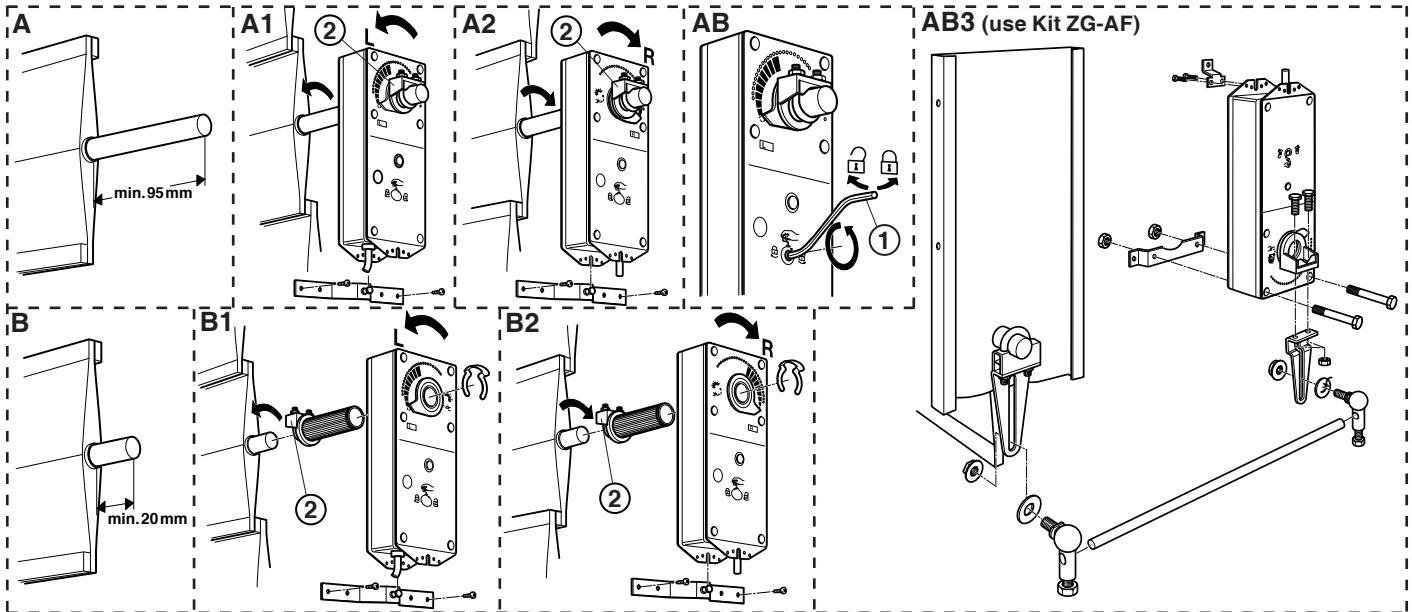
6. OVERALL DIMENSIONS – DESCRIPTION



7. WIRING DIAGRAMS



8. INSTALLATION SEQUENCE



NB: To reverse the direction of rotation, turn round the actuator. To attach the actuator to the dampers with shafts of different lengths, check the position of the particular “(2) securing shaft”, in respect of the actuator. AB= Manual movement of the actuator: to carry out this operation use the key (1) supplied in the same packaging (see diagram).

Amendments to data sheet

Date	Revision No.	Page	Section	Description amendments
18.11.05 MC	-	-	General	Layout Data Sheet
20.04.06 MC	-	1	General	Arrangement data & page layout.
		2	7. Wiring diagrams	Added: diagrams & descriptive tables.
		1	3. Accessories	Added: specific accessories for installing actuator, (KH-AF, ZG-AF).
19.12.08 MC	01	2	8. Installation sequence	Replaced all the drawings and table at foot of page.



Head Office & Sales
 Via San G.B. De La Salle, 4/a Tel. +39 022722121
 20132 - Milano Fax +39 022593645
 Orders Fax +39 0227221239
 Reg. Off. Central & Southern
 Via S. Longanesi, 14 Tel. +39 065573330
 00146 - Roma Fax +39 065566517
Shipping
 Via Gen. Treboldi, 190/192 Tel. +39 0364773200
 25048 - Edolo (BS) Tel. +39 0364773202
 E-mail: info@coster.eu Web: www.coster.eu



D 33338